

System Maintenance and Monitoring

This chapter provides information about the system maintenance and monitoring capabilities available in the Element Management System (EMS).

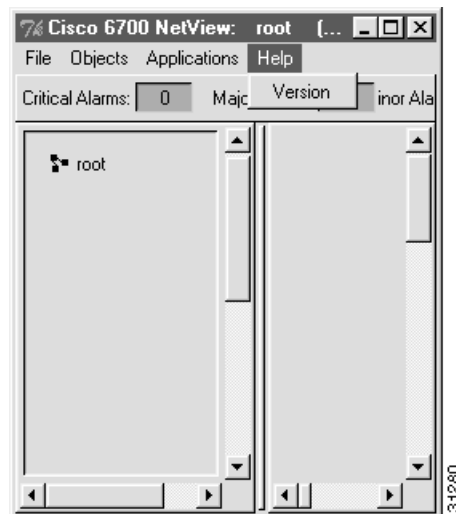
System Information

EMS provides the following information about your Cisco 6700 NE, its plugin cards, and EMS.

EMS Version

To display the version of EMS software currently running on a workstation, select **Help > Version** from either the net view or node view. (See Figure 13-1.) EMS displays the date and release number of the software in use.

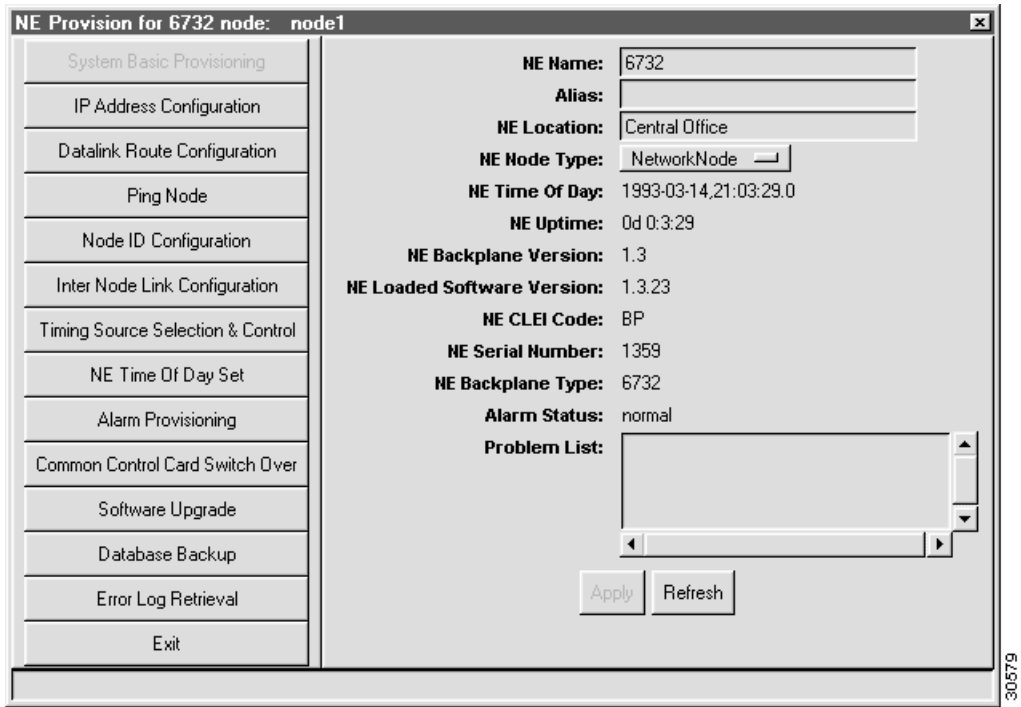
Figure 13-1 Net View Menu



NE Information

To display information about a particular NE, launch the node view, and double-click the nameplate to launch the NE provision window. (See Figure 13-2.) Information provided includes backplane version and type, software version, NE CLEI (common language equipment identifier) code, serial number, and problem list.

Figure 13-2 System Basic Provisioning Window



Card Information

To display information about a particular line card or common card, select **Objects > Plugin Card Detail Information** from the node view menu bar. EMS displays the plugin card provision window. (See Figure 13-3.) Information provided includes card type, administrative status, operational status, software and hardware versions, FPGAs (field programmable gate arrays), CLEI code, and serial number.

Figure 13-3 Plugin Card Provision Window



Ethernet Shutdown for System Protection

The Ethernet port on the Cisco 6705 main control card (MCC) can be shut down to secure the Cisco 6705 NE and prevent unauthorized system access.



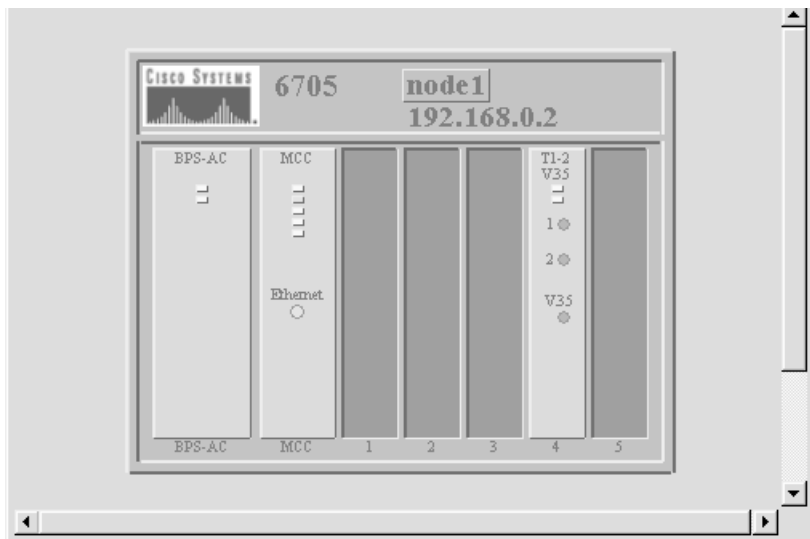
Caution Placing the MCC Ethernet port out of service should only be performed after all provisioning is complete. You will not be able to communicate with the NE if this port is disabled and a solid inter-node data link (INDL) has not been established between the NE in question and a remote NE.

Before disabling the Ethernet port, Cisco recommends backing up the NE database. This information can be retrieved and used if any system difficulties occur.

To place the Cisco 6705 MCC Ethernet port out of service:

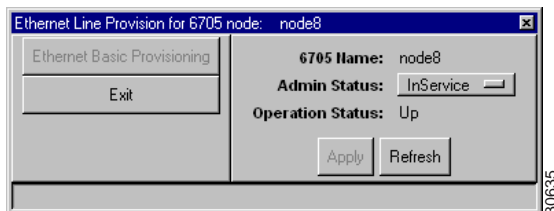
Step 1 From a remote EMS workstation, double-click on the MCC Ethernet port. (See Figure 13-4.)

Figure 13-4 Cisco 6705 Node View



Step 2 EMS displays the Ethernet line provision window (see Figure 13-5).

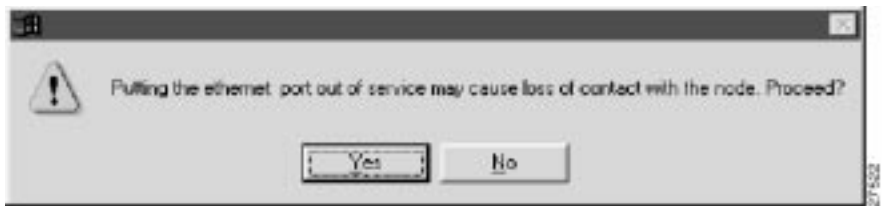
Figure 13-5 Put MCC Ethernet Port Out of Service



Step 3 Set the **Admin Status** of the Ethernet port to **OutOfService**.

Step 4 Click **Apply** to put the Ethernet port out of service. EMS displays a warning message. (See Figure 13-6.)

Figure 13-6 Put MCC Ethernet Port Out of Service



Press **Yes** to disable the Ethernet port.

Note After the Ethernet port is disabled, the port will be inoperable until a remote instruction to place the port in service is made from an EMS workstation via an INDL.
