



OL-0280-01 10/04/99

# Release Note for the Cisco 6200 Manager Release 2.0.1

---

**10/04/99**

This release note describes the Cisco 6200 Manager application Release 2.0.1. The Cisco 6200 Manager is a Java-based element management application. The software is Y2K compliant. An element is a device on the network, such as a Cisco 6200 digital subscriber line access multiplexer (DSLAM). There are two components to the Cisco 6200 Manager—a manager server process application and a graphical user interface (GUI) client application. The Cisco 6200 Manager provides configuration, monitoring, and management support for the Cisco 6200 DSLAM.

The Cisco 6200 DSLAM is a central office (CO)-grade multiplexer that supports up to 80 asymmetric digital subscriber line (ADSL) ports. The Cisco 6200 sends and receives subscriber data over subscribers' existing copper telephone lines, concentrating all traffic onto a single 155-Mbps OC-3c trunk for transport to the Internet or the enterprise intranet.

The Cisco 6200 DSLAM is part of the Cisco 6200 family—an integrated set of digital subscriber line (DSL) products that provide end-to-end service, carrying data between the subscriber's home or office, the telephone CO, and the networks beyond.

## 1. Contents

This document contains the following information:

- Product Packaging, page 2
- Product Documentation, page 2
- Software Version Requirements, page 2
- Workstation Requirements, page 2
- Installing the Cisco 6200 Manager, page 3
- Caveats, page 6
- Cisco Connection Online, page 7
- Documentation CD-ROM, page 8

---

**Corporate Headquarters**  
Cisco Systems, Inc.  
170 West Tasman Drive  
San Jose, CA 95134-1706  
USA

Copyright © 1999  
Cisco Systems, Inc.  
All rights reserved.

## 2. Product Packaging

The Cisco 6200 Manager application can be downloaded from the Web and is also available on the application's CD-ROM.

The files on the Web are

- mgr2-0-1winnt.exe—A self-extracting zip file containing the Cisco 6200 Manager software application
- mgr2-0-1winnt.readme.txt—An ASCII file containing information on the Cisco 6200 Manager application

The files on the CD-ROM are

- setup.exe—A file to run to install the Cisco 6200 Manager from the CD-ROM
- readme text—An ASCII file containing information on the Cisco 6200 Manager application
- Other product-related files

## 3. Product Documentation

The *User Guide for the Cisco 6200 Manager* provides task-based information for installing and using the Cisco 6200 Manager application. The manual is available in hard copy and on the Web.

You can access Cisco technical documentation on the Web at <http://www.cisco.com>. For more information, refer to the "Cisco Connection Online" section later in this document.

## 4. Software Version Requirements

The Cisco 6200 Manager runs on any IBM PC compatible machine that has Windows NT, Version 4.0, Service Pack 4 or later. You must have Administrator privileges to install the software under the Windows NT operating system.

Release 2.0.1 of the Cisco 6200 Manager is designed to work with Cisco 6200 DSLAMs that are running Cisco IOS Release 11.3(1)DA6.

## 5. Workstation Requirements

To ensure a successful installation of the Cisco 6200 Manager application, see that your workstation meets the requirements listed in Table 1.

Table 1 lists the Cisco 6200 Manager PC requirements for running the Cisco 6200 server and the Cisco 6200 client application. It also lists the recommended configuration if you decide to run the Cisco 6200 server and one Cisco 6200 client on the same machine.

**Table 1 Cisco 6200 Manager PC Requirements**

To Run the...	You Need...
Server only	Desktop PC Windows NT 4.0, Service Pack 4 or later Pentium II 300-MHz processor or better CD-ROM drive 64 MB of memory 1 Ethernet card to connect to the Cisco 6200 Manager clients and Cisco 6200 system 25 MB free disk space (installation plus runtime space)
Client only	Desktop or laptop PC Windows NT 4.0, Service Pack 4 or later Pentium II 450-MHz processor or better CD-ROM drive 128 MB of memory 1 Ethernet card to connect to the Cisco 6200 Manager server 16-bit color video controller 20 MB free disk space (installation)
Server and one GUI client on the same machine	Desktop PC Windows NT 4.0, Service Pack 4 or later Pentium II 450-MHz processor or better CD-ROM drive 128 MB of memory 1 Ethernet card to connect to the Cisco 6200 Manager client and Cisco 6200 system 16-bit color video controller 45 MB free disk space (installation plus runtime space)

## 6. Installing the Cisco 6200 Manager

The Cisco 6200 Manager software is available on CD-ROM. This section provides instructions for installing the Cisco 6200 Manager client and server software. It covers the two types of setup available for installing the software, typical and custom. The typical setup installs the server and client and lets you run these components on the same machine. The custom setup lets you install individual components, such as the client software or the server software.

### 6.1 Typical Installation

To load both the Cisco 6200 Manager GUI client and server process software from your CD-ROM drive, perform the following steps:

**Step 1** Turn on your system and monitor.

**Step 2** Put the CD-ROM disc into the CD-ROM drive.

To start the Cisco 6200 Manager installation program, perform the following steps:

**Step 1** Double click the **My Computer** icon.

**Step 2** Double click the icon for the CD-ROM drive.

**Step 3** Double click **setup.exe**.

**Step 4** Follow the instructions on your screen.

**Step 5** When you get to the Setup Type window, select **Typical** and click **Next**.

The typical setup installs the server and client and allows them to run on the same machine.

**Step 6** Click **Finish** to complete the setup.

## 6.2 Custom Installation

Use these instructions if you want to install either the GUI client software or the server process software on your computer. You should also use this procedure to recover the default user password. To start the Cisco 6200 Manager program, perform the following steps:

**Step 1** Double click the **My Computer** icon.

**Step 2** Double click the icon for the CD-ROM drive.

**Step 3** Double click **setup.exe**.

**Step 4** Follow the instructions on your screen.

**Step 5** When you get to the Setup Type window, select **Custom** and click **Next**.

**Step 6** Select the component(s) you want to install.

Custom setup allows you to selectively install individual components. Click **C6200 Client** for client only install, **C6200 Server** for server only install, and click **User Admin** to recover the default user password.

---

**Note** Reinstall User Admin if you lost your password or if you want to restore a deleted server. This approach leaves intact any manager servers or Cisco 6200 DSLAMs you added to the Cisco 6200 client.

---

**Step 7** Click **Next** to complete setup.

## 6.3 Starting the Cisco 6200 Manager for the First Time

After you have installed the Cisco 6200 Manager application, start the program by following these steps:

**Step 1** Click **Start** and choose **Programs**. Click **C6200 Server**. A Server Log window is displayed.

**Step 2** After the Server Log window displays, click **Start** and choose **Programs**. Click **C6200 Client**.

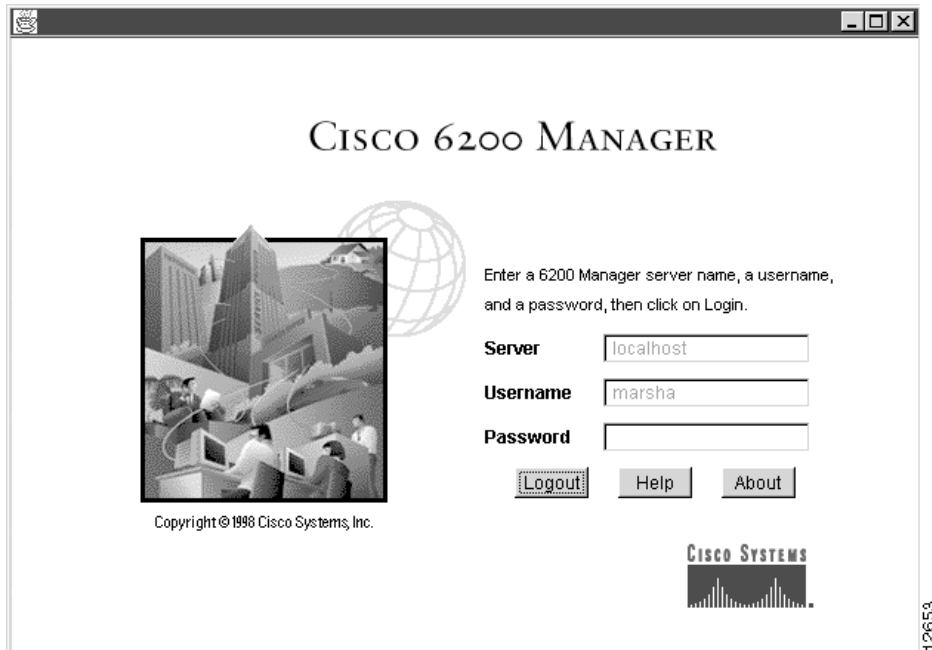
The Cisco 6200 Manager login window is displayed (see Figure 1).

---

**Note** A local or remote server application must be running in order for you to complete the login procedure.

---

**Figure 1 Cisco 6200 Manager Login Window**



- Step 3** Verify that the Server field contains the name or IP address of a PC that is running the Cisco 6200 Manager server process application:
- If the server application is installed on your PC, the software uses your computer as a server.
  - If the server software is not installed on your PC, you must enter the name or IP address of a computer that is running the server process application.
- Step 4** Enter **c6200** in both the Username and Password fields.

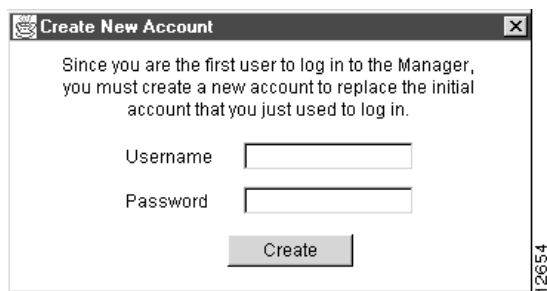
---

**Note** If you have used this installation before, enter your user name and password rather than **c6200**.

---

- Step 5** Click **Login**.  
The Create New Account window (see Figure 2) displays.

**Figure 2 Create New Account Window**



- Step 6** Enter a user name and password. The user name and password are case sensitive.
- Step 7** Click **Create**. The Server Polling Status window appears (see Figure 3).

**Figure 3 Server Polling Status Window**



## 6.4 Removing the Cisco 6200 Manager

If you want to remove the Cisco 6200 Manager software, use the Add/Remove program found in the control panel. Click **Start** and then point to **Settings**. Double click the Add/Remove program icon. The **Add/Remove** program removes shortcuts and registry entries and deletes the Cisco 6200 data and executable files.

## 7. Caveats

This section describes unexpected behavior and lists the problems resolved in Release 2.0.1 of the Manager software.

### 7.1 Unexpected Behavior

This section describes possible unexpected behavior by the Cisco 6200 Manager.

[CSCdm05338] The Cisco 6200 Manager does not provide accurate time stamps if you disable the Windows feature that automatically adjusts the clock for daylight savings changes. This problem is due to a bug in Java. Recommendation: Do not uncheck "Automatically adjust clock for daylight savings changes" in the Time Zones tab of the Date/Time application in the Windows NT Control Panel.

[CSCdm64664] The statistics table displays entries with wrong timestamps every 498th day of continuous operation by a DSLAM.

## 7.2 Resolved Problems

This section describes problems resolved in Release 2.0.1 of the software.

- CSCdk13414 Subscriber name field not wide enough in fault panel.
- CSCdk16419 Client reports line rates for unprovisioned ports instead of N/A.
- CSCdk16520 When a Manager user unprovisions a card while another Manager user configures a subscriber, the system sometimes generates a cryptic error message.
- CSCdm27829 User login name and password can contain special characters.
- CSCdm28041 Help text images sometimes do not display.
- CSCdm29575 Windows cannot be minimized or resized.
- CSCdm59351 In some cases there is no warning message when a server cannot complete an operation.

## 8. Cisco Connection Online

Cisco Connection Online (CCO) is Cisco Systems' primary, real-time support channel. Maintenance customers and partners can self-register on CCO to obtain additional information and services.

Available 24 hours a day, 7 days a week, CCO provides a wealth of standard and value-added services to Cisco's customers and business partners. CCO services include product information, product documentation, software updates, release notes, technical tips, the Bug Navigator, configuration notes, brochures, descriptions of service offerings, and download access to public and authorized files.

CCO serves a wide variety of users through two interfaces that are updated and enhanced simultaneously: a character-based version and a multimedia version that resides on the World Wide Web (WWW). The character-based CCO supports Zmodem, Kermit, Xmodem, FTP, and Internet e-mail, and it is excellent for quick access to information over lower bandwidths. The WWW version of CCO provides richly formatted documents with photographs, figures, graphics, and video, as well as hyperlinks to related information.

You can access CCO in the following ways:

- WWW: <http://www.cisco.com>
- WWW: <http://www-europe.cisco.com>
- WWW: <http://www-china.cisco.com>
- Telnet: [cco.cisco.com](http://cco.cisco.com)
- Modem: From North America, 408 526-8070; from Europe, 33 1 64 46 40 82. Use the following terminal settings: VT100 emulation; databits: 8; parity: none; stop bits: 1; and connection rates up to 28.8 kbps.

For a copy of CCO's Frequently Asked Questions (FAQ), contact [cco-help@cisco.com](mailto:cco-help@cisco.com). For additional information, contact [cco-team@cisco.com](mailto:cco-team@cisco.com).

---

**Note** If you are a network administrator and need personal technical assistance with a Cisco product that is under warranty or covered by a maintenance contract, contact Cisco's Technical Assistance Center (TAC) at 800 553-2447, 408 526-7209, or [tac@cisco.com](mailto:tac@cisco.com). To obtain general information about Cisco Systems, Cisco products, or upgrades, contact 800 553-6387, 408 526-7208, or [cs-rep@cisco.com](mailto:cs-rep@cisco.com).

---

## 9. Documentation CD-ROM

Cisco documentation and additional literature are available in a CD-ROM package, which ships with your product. The Documentation CD-ROM, a member of the Cisco Connection Family, is updated monthly. Therefore, it might be more up to date than printed documentation. To order additional copies of the Documentation CD-ROM, contact your local sales representative or call customer service. The CD-ROM package is available as a single package or through an annual subscription. You can also access Cisco documentation on the World Wide Web at <http://www.cisco.com>, <http://www-china.cisco.com>, or <http://www-europe.cisco.com>.

---

This document is to be used in conjunction with the *User Guide for the Cisco 6200 Manager* publication.

Access Registrar, AccessPath, Any to Any, AtmDirector, CCDA, CCDE, CCDP, CCIE, CCNA, CCNP, CCSI, CD-PAC, the Cisco logo, Cisco Certified Internetwork Expert logo, CiscoLink, the Cisco Management Connection logo, the Cisco NetWorks logo, the Cisco Powered Network logo, Cisco Systems Capital, the Cisco Systems Capital logo, Cisco Systems Networking Academy, the Cisco Systems Networking Academy logo, the Cisco Technologies logo, ConnectWay, Fast Step, FireRunner, GigaStack, IGX, Internet Quotient, Kernel Proxy, MGX, Natural Network Viewer, NetSonar, Network Registrar, Packet, PIX, Point and Click Internetworking, Policy Builder, Precept, Secure Script, ServiceWay, SlideCast, SMARTnet, The Cell, TrafficDirector, TransPath, ViewRunner, VisionWay, VlanDirector, Workgroup Director, and Workgroup Stack are trademarks; Changing the Way We Work, Live, Play, and Learn, Empowering the Internet Generation, The Internet Economy, and The New Internet Economy are service marks; and ASIST, BPX, Catalyst, Cisco, Cisco IOS, the Cisco IOS logo, Cisco Systems, the Cisco Systems logo, the Cisco Systems Cisco Press logo, Enterprise/Solver, EtherChannel, EtherSwitch, FastHub, FastLink, FastPAD, FastSwitch, GeoTel, IOS, IP/TV, IPX, LightStream, LightSwitch, MICA, NetRanger, Post-Routing, Pre-Routing, Registrar, StrataView Plus, Stratm, TeleRouter, and VCO are registered trademarks of Cisco Systems, Inc. and/or its affiliates in the U.S. and certain other countries. All other trademarks mentioned in this document are the property of their respective owners. The use of the word partner does not imply a partnership relationship between Cisco and any of its resellers. (9909R)

Copyright © 1999, Cisco Systems, Inc.  
All rights reserved.